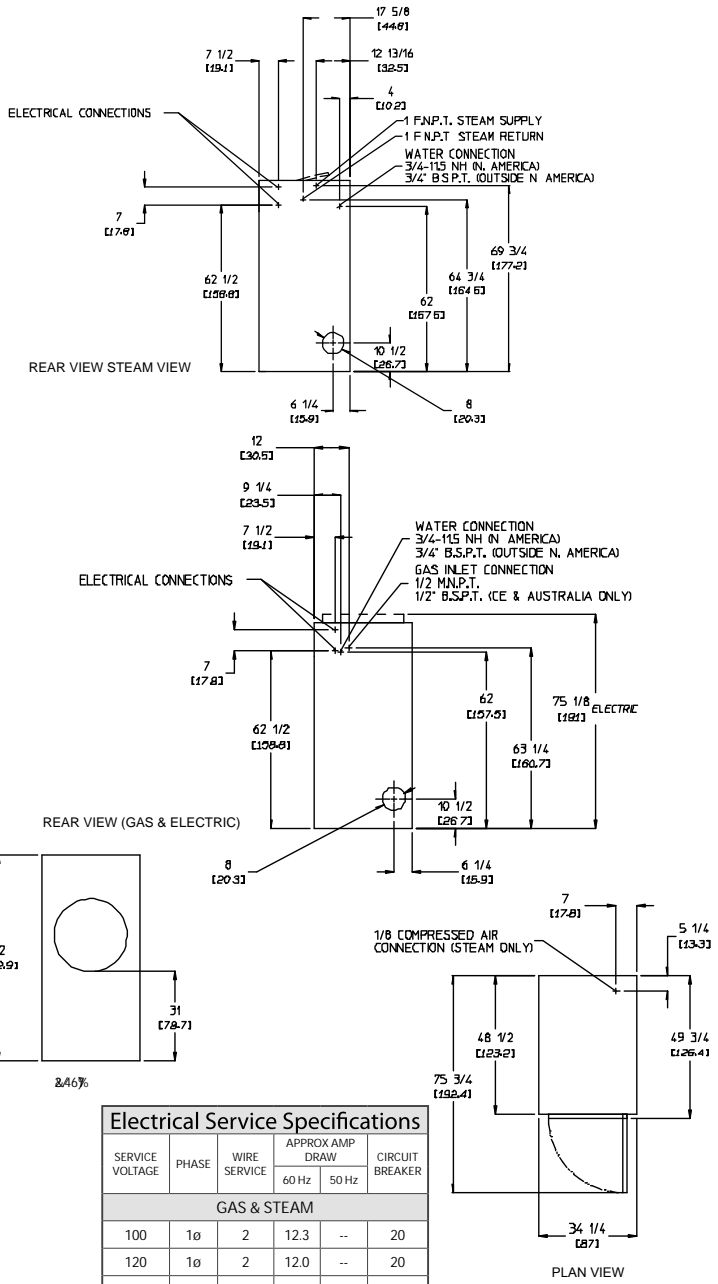


AD-50V Specifications

Tumbler Capacity (dry weight)	50 lbs. (22.68 kg)														
Tumbler Diameter	32-3/4" (83.19 cm)														
Tumbler Depth	37-1/2" (95.25 cm)														
Tumbler Volume	18.30 cu ft (518.20 L)														
Tumbler/Drive Motor (non-reversing/reversing)	3/4 hp / 1/2 hp* (0.56 kW / 0.37 kW)														
Blower/Fan Motor (non-reversing/reversing)	-- / 1/2 hp* (0.37 kW)														
Door Opening (Diameter)	21-1/2" (54.61 cm)														
Door Sill Height	33-1/8" (84.15 cm)														
S.A.F.E. Water Connection	3/4"-11.5 NH (North America) 3/4" B.S.P.T. (Outside North America)														
Dryers per 20'/40' Container	10 / 20														
Dryers per 48'/53' Truck	24 / 26														
Width	34-1/4" (87 cm)														
Depth	49-3/4" (126.4 cm)														
Height	72" (182.9 cm)														
Airflow gas/electric/steam	60 Hz 750 cfm (21.24 cmm) 50 Hz 625 cfm (17.70 cmm)														
Exhaust Connection (Diameter)	8" (20.32 cm)														
GAS MODEL:	Approx. Net Wt. 651 lbs (295.29 kg) Approx. Ship Wt. Heat Input 700 lbs (317.51 kg) 150,000 btu/hr (37,799 kcal/hr) Inlet Pipe Connection 1/2" M.N.P.T.** 1/2" B.S.P.T. (CE and Australia) 00MZ														
ELECTRICAL MODEL:	Approx. Net Wt. 651 lbs (295.29 kg) Approx. Ship Wt. 700 lbs (317.51 kg)														
<table border="1" style="width: 100%; border-collapse: collapse;"> <thead> <tr> <th colspan="2">Oven Size</th> <th rowspan="2">Approx. Net Wt.</th> <th rowspan="2">Approx. Ship Wt.</th> </tr> <tr> <th>kW</th> <th>Btu/hr (kcal/hr)</th> </tr> </thead> <tbody> <tr> <td>20</td> <td>68,200 (17,200)</td> <td rowspan="3">651 lbs (295.29 kg)</td> <td rowspan="3">700 lbs (317.51 kg)</td> </tr> <tr> <td>24</td> <td>81,900 (20,600)</td> </tr> <tr> <td>30</td> <td>102,400 (25,800)</td> </tr> </tbody> </table>	Oven Size		Approx. Net Wt.	Approx. Ship Wt.	kW	Btu/hr (kcal/hr)	20	68,200 (17,200)	651 lbs (295.29 kg)	700 lbs (317.51 kg)	24	81,900 (20,600)	30	102,400 (25,800)	
Oven Size		Approx. Net Wt.			Approx. Ship Wt.										
kW	Btu/hr (kcal/hr)														
20	68,200 (17,200)	651 lbs (295.29 kg)	700 lbs (317.51 kg)												
24	81,900 (20,600)														
30	102,400 (25,800)														
STEAM MODEL:***	Approx. Net Wt. 683 lbs (309.80 kg) Approx. Ship Wt. 733 lbs (332.48 kg) Steam Consumption 142 lb/hr (64.41 kg/hr) Operating Steam Pressure Boiler Horsepower (Normal Load) 4.1 Bhp Supply Connection 1" F.N.P.T.** Return Connection 1" F.N.P.T.**														



Electrical Service Specifications

SERVICE VOLTAGE	PHASE	WIRE SERVICE	APPROX AMP DRAW		CIRCUIT BREAKER
			60 Hz	50 Hz	
GAS & STEAM					
100	1ø	2	12.3	--	20
120	1ø	2	12.0	--	20
208	1ø	2	7.1	--	15
220	1ø	2	7.0	5.3	15
230	1ø	2*	--	4.9	15
240	1ø	2	6.5	4.2	15

Specifications in parentheses are metric equivalents.

REV 6/4/12

* Reversing dryers use 3-phase (3ø) motors.

** Size of piping to dryer varies with installation conditions. Contact factory for assistance.

*** Specify air-operated or electromechanical steam damper system. Air-operated steam damper system must be provided with clean, dry, and regulated 80 psi +/- 10 psi (5.51 bar +/- 0.69 bar) air supply.

Electrical Service Specifications

SERVICE VOLTAGE	PHASE	WIRE SERVICE	APPROX AMP DRAW		CIRCUIT BREAKER
			60 Hz	50 Hz	
GAS & STEAM					
208	3ø	3	3.0	--	15
220	3ø	3	3.8	--	15
230	3ø	3	--	3.6	15
240	3ø	3	3.2	--	15
380	3ø	4*	--	2.2	15
400	3ø	4*	--	2.2	15
416	3ø	4*	--	2.3	15
460	3ø	3	2.1	--	15
480	3ø	3	2.1	--	15

Electrical Service Specifications

SERVICE VOLTAGE	PHASE	WIRE SERVICE	APPROX AMP DRAW		CIRCUIT BREAKER
			60 Hz	50 Hz	
30 kW Electric					
208	3ø	3	90	--	125
220	3ø	3	86	84	125
230	3ø	3	79	80	100
240	3ø	3	79	--	100
380	3ø	4*	52	51	70
400	3ø	4*	--	48	60
416	3ø	4*	--	47	60
440	3ø	3	42	--	60
460	3ø	3	40	--	50
480	3ø	3	38	--	50
575	3ø	3	32	--	40
600	3ø	3	31	--	40
20 kW Electric					
208	1ø	2	103	--	150
220	1ø	2	96	--	125
230	1ø	2	93	92	125
240	1ø	2	90	--	125
24 kW Electric					
208	3ø	3	74	--	100
220	3ø	3	70	--	90
230	3ø	3	--	65	80
240	3ø	3	64	--	80
380	3ø	4*	43	42	60
416	3ø	4*	--	38	50
480	3ø	3	31	--	40

